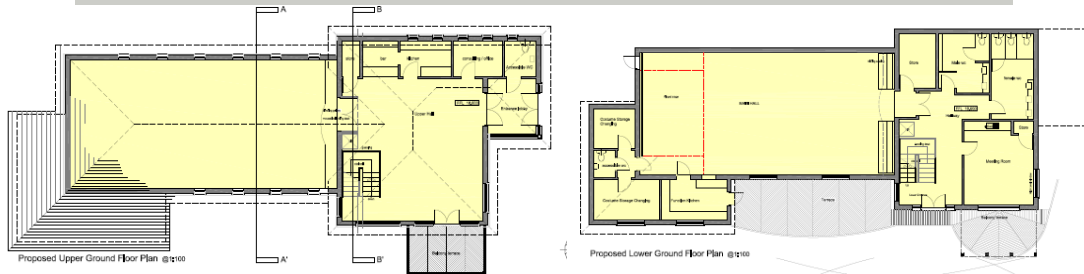


# **LAMBEAGE HALL LIFT OFF !** **YOUR OPPORTUNITY TO HAVE A SAY**



## ***COME TO OUR PUBLIC MEETING ON TUESDAY 23RD OCTOBER AT 7 PM AND HAVE YOUR SAY.***

Richard Thomas of RPT Associates will present the final draft design which following your input will go forward for planning permission at the end of this year. We have seen the early plans and we do hope you like what has been done, come and see!

Meanwhile good progress has been made on closing the funding gap between the £12,000 granted by WCLAG and the final cost of design and planning. We especially thank all those who have signed standing order donation forms, as these show both emotional and financial support for replacing the hall. If you have lost yours, or need another, see overleaf for a copy or visit our website [www.lambeagehall.org.uk](http://www.lambeagehall.org.uk). The amount is not important but your name as a supporter is.

Together with significant donations from the Coverack singers and Helston Rotary we have an impressive start to funding. Bryn Hackland has joined the team to help us raise the funds to actually rebuild the hall, and these local donations are good evidence of support for the cause.

A Barn Owl and Bat survey of the hall has been carried out and none found, this is an essential ingredient of the planning application.

All donations or offers to help with the work will be gratefully received by the treasurer Tim Hawkins, or Terry Thompson [thompson.51@hotmail.co.uk](mailto:thompson.51@hotmail.co.uk)

Visit [www.lambeagehall.org.uk](http://www.lambeagehall.org.uk) or look out for notices of details of forthcoming 'Fashion Show' to be held 7.0pm to finish on Friday 2 Friday November 2012